



Wireless & Handheld Mobile Ultrasound Scanner

Unleash your vision

Reliable image for every moment.



Scanning with Continuous Power in Hand

Up to 4 hours battery life under active usage



Uncompromising Image Quality

Benchmarked against cart-based ultrasound with proprietary algorithm and beamform technology



Fast Connection on Android & iOS, DICOM 3.0 Supported

- App-based ultrasound without additional subscription
- DICOM 3.0 system supported and smoothly integrated with PACS/HIS*



Imaging Parameters & Presets Customized for Clinicians

- 30+ imaging parameters can be customized by users
- 15+ presets for quick and easy start. The user can also create their own custom presets



Reliable Clinical Auto-measurement

Easy auto-measure tools for obstetrics and cardiology, providing useful estimation for diagnosis

LeSONO



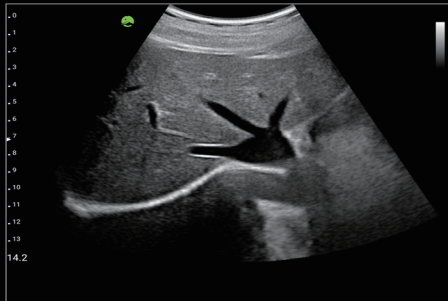
	LU700L	LU700C	LU710C	LU710M	LU710PA	LU710LH
Frequency Bandwidth	5 - 12.5 MHz	2.0 - 5.0 MHz	2.0 - 5.0 MHz	4.0 - 8.5 MHz	1.7 - 3.7 MHz	4.0 - 17.0 MHz
Max Depth	6 cm	18 cm	18 cm	12 cm	18 cm	8 cm
Field of View	-	60°	60°	100°	90°	-
Clinical Applications	Can be customized in app					
	<ul style="list-style-type: none"> Breast Carotid MSK Peripheral Vessels Superficial Superficial Mirror Thyroid 	<ul style="list-style-type: none"> Abdomen Abdomen Difficult Bladder Meas. FAST GYN OB Early OB Mid Late Renal Spleen 	<ul style="list-style-type: none"> Abdomen Abdomen Difficult Bladder Meas. FAST GYN OB Early OB Mid Late Renal Spleen 	<ul style="list-style-type: none"> Abdomen Abdomen Difficult Abdomen Difficult 	<ul style="list-style-type: none"> Abdomen Cardiac 	<ul style="list-style-type: none"> Breast Carotid MSK Ocular Peripheral Vessels Superficial Superficial Mirror Thyroid
Wi-Fi	802.11b/g					
Modes	B-Mode, M-Mode, Color Doppler*, PW*, Power Doppler*					
DICOM	DICOM 3.0*					
Battery Working Time	Up to 4 hours					
Operating System	   					

(*optional)

- This product, features, options, and transducers are not commercially available in all countries.
- Sales and Shipments are effective only after the approval by the regulatory affairs. Please contact your local sales representative for further details.

Full scanning mode for diverse diagnostic condition

LeSONO supports B mode, M mode, Color Doppler, Power Doppler and Pulsed Wave mode.



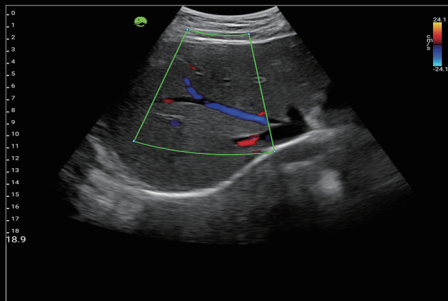
Liver transverse, B mode



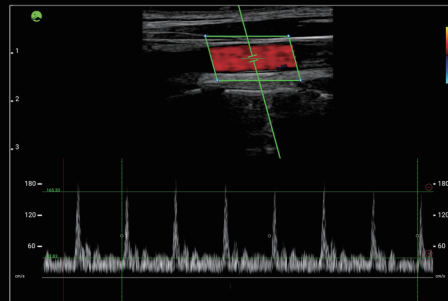
Gallbladder, B mode



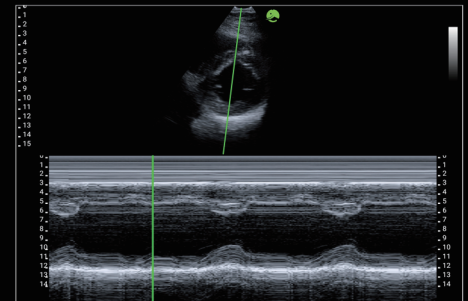
Heart, B mode



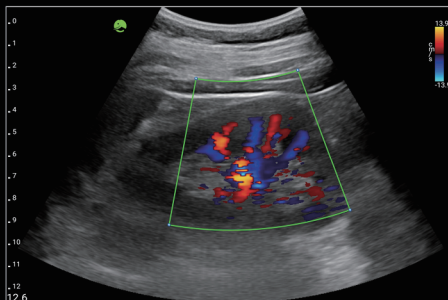
Liver, Color doppler



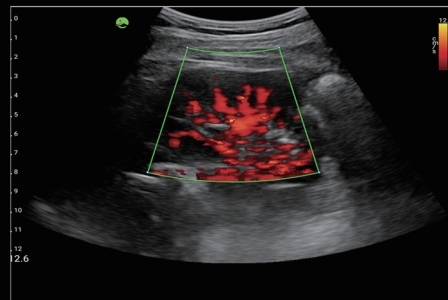
Carotid, Pulsed wave



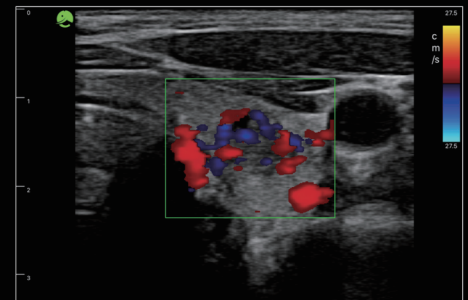
Heart, M mode



Kidney, Color doppler



Kidney, Power doppler



Thyroid gland, Color doppler



6F-3, No.293, Sec. 1, Beixin Rd., Xindian Dist.,
New Taipei City 231634, Taiwan, R.O.C.
info@leltek.com



<http://www.leltek.com>